



Formulation

2K Polyamide Cured Epoxy Red Iron Oxide Primer using HALOX CW-491

COMPONENT A:

<u>GRIND</u>		<u>% Wt./Wt.</u>	
Epon 1001- X-75	[1]	22.49	Resin
Cellosolve	[2]	6.61	Solvent

Premix the next 3 ingredients before adding:

Xylene		6.17	Solvent
Bentone 34	[3]	0.62	Thickener
Methanol		0.22	Solvent

Add the following at high speed and disperse to 5 NS Hegman grind.

Bayferrox 180M	[4]	7.05	Pigment
HALOX CW-491		6.61	A.C. Pigment
Micro Talc A.T. Extra	[5]	26.44	Filler

LETDOWN (with following while mixing at low speed)

Xylene		2.20	Solvent
Cellosolve	[2]	3.53	Solvent
Beetle 1032-10	[6]	2.20	Flow & Leveling Agent
Diacetone Alcohol	[2]	2.20	Solvent

COMPONENT B:

Add the following under agitation and mix until uniform.

HZ 815-X-70	[7]	12.34	Curing Agent
Cellosolve	[2]	1.32	Solvent

*Mix ratio:** Component A - 80% by volume.
Component B - 20% by volume.

**To obtain optimum results, allow 20-30 minutes induction time prior to application.*

TOTAL 100.00

The information contained herein is correct to the best of our knowledge, but is intended only as a source of information. The recommendations or suggestions herein are made without guarantee of representation as to results, and we suggest that you evaluate the recommendations contained in this formulation in your own laboratory prior to use.

RO4097/491E

FORMULA CONSTANTS

% Pigment/Wt.	41.25
% Pigment/Vol.	18.40
% Solids/Wt.	68.15
% Solids/Vol.	50.98
% PVC	36.02
VOC g/l	

FORMULA PROPERTIES

Density g/l	1361.40
KU Visc. @ R.T.	90- 100
Pot Life	24 hours
Set-to-touch	30 minutes
Dry Hard	3 hours

SUPPLIER KEY

- [1] Resolution Performance Products
- [2] Union Carbide Europe
- [3] RHEOX Europe
- [4] Bayer AG
- [5] Norwegian Talc, Ltd.
- [6] Cytec Industries B.V.
- [7] Ciba Specialty Chemicals

SAH-011501

2K POLYAMIDE CURED EPOXY PRIMER

Salt Spray - CRS - 3 mils / 2 mils TC - % t.f.w.

PRIMER ONLY - 672 hours



PRIMER & TOPCOAT - 1300 hours



BLANK (no inhibitor)

Zinc Chromate @ 4.4%

HALOX 491@ 6.6%

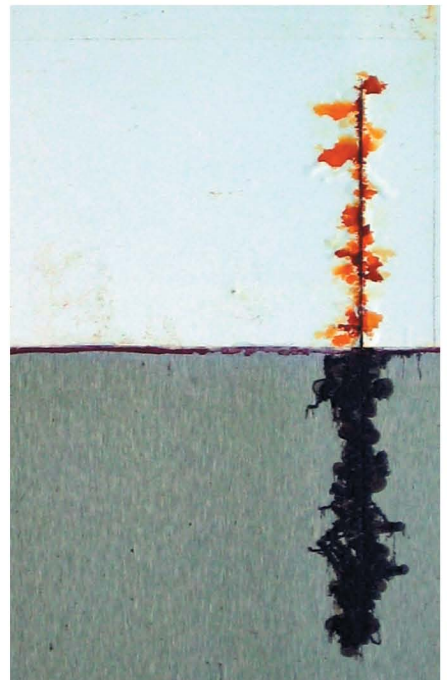
2K POLYAMIDE CURED EPOXY PRIMER

Prohesion - CRS - 3 mils / 2 mils TC - % t.f.w.

PRIMER ONLY - 1,416 hours



PRIMER & TOPCOAT - 1,416 hours



BLANK (no inhibitor)

Zinc Chromate @ 4.4%

HALOX 491@ 6.6%