



# Formulation

## 2K Polyamide Cured Epoxy Red Iron Oxide Primer Based on Epon 1001-X-75 & HZ 815-X-70 using HALOX BW-111

	<u>% Wt</u>	<u>Class</u>
<i>COMPONENT A:</i>		
<i>GRIND</i>		
Epon 1001-X-75	[1] 21.80	Resin
Cellosolve	[2] 6.41	Solvent
<i>Premix the next 3 ingredients before adding.</i>		
Xylene	[3] 5.99	Solvent
Bentone 34	[4] 0.60	Thickener
Methanol	[3] 0.21	Solvent
<i>Add the following under good agitation.</i>		
<i>High speed disperse to 5+ NS Hegman grind.</i>		
RO-4097 Kroma Red	[5] 6.84	Pigment
HALOX BW-111	[6] 9.41	Inhibitor
Nyral 400	[7] 25.65	Talc
<i>Letdown with following while mixing at low speed.</i>		
Xylene	[3] 2.14	Solvent
Cellosolve	[2] 3.42	Solvent
Beetle 1032-10	[8] 2.14	Resin
Diacetone Alcohol	[1] 2.14	Solvent
<i>COMPONENT B:</i>		
<i>Add the following under good agitation.</i>		
<i>Mix well until uniform.</i>		
HZ 815-X-70	[9] 11.97	Curing Agent
Cellosolve	[2] 1.28	Solvent
<i>Mix ratio: Component A - 80% by Volume, Component B - 20% by Volume.</i>		
<i>To obtain optimum results, allow 20-30 mins induction time prior to application</i>		
TOTAL	100.00	

### Formula Constants

Density (g/L)	1377.37
Weight Pigment (%)	41.90
Volume Pigment (%)	18.69
Weight Solids (%)	68.51
Volume Solids (%)	51.52
PVC (%)	36.63
VOC (g/L)	433.70

### Formula Properties

KU Viscosity @ 25C	90 - 100
--------------------	----------

### Supplier Key

- [1] HEXION
- [2] Union Carbide Corporation
- [3] Ashland Chemical Company
- [4] Elementis Specialties, Inc.
- [5] Elementis Pigments Inc.
- [6] HALOX
- [7] R.T. Vanderbilt Company, Inc.
- [8] CYTEC
- [9] Ciba Specialty Chemicals

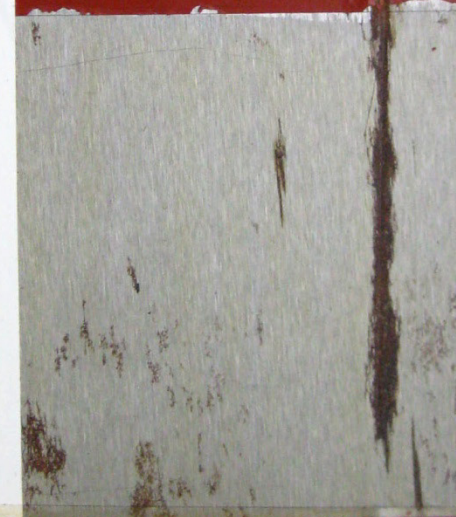
*The information contained herein is correct to the best of our knowledge, but is intended only as a source of information. The recommendations or suggestions herein are made without guarantee of representation as to results, and we suggest that you evaluate the recommendations contained in this formulation in your own laboratory prior to use.*

2K POLYAMIDE EPOXY  
BLANK CONTROL  
NO INHIBITOR



3.0 mils / 75 microns  
1416 hrs. Salt Spray

2K POLYAMIDE EPOXY  
BW-111  
1.10 lbs/gal - 132 g/L



3.0 mils / 75 microns  
1416 hrs. Salt Spray