



Formulation

Water Reducible Alkyd Enamel with Duramac 207-3738

using HALOX SZP-391 JM and HALOX 570

		<u>LBS</u>	<u>GALS</u>
<i>GRIND</i>			
Duramac WR 207-3738	[1]	134.70	15.48
Ammonia Hydroxide (28%)		6.50	0.87
2-Butanol		4.42	0.66
Butyl Cellosolve	[2]	6.42	0.85
BYK-301	[3]	0.90	0.11
Ti-Pure R-900	[4]	124.33	3.73
HALOX SZP-391 JM	[5]	48.80	1.77
Water		56.71	6.80
<i>Ensure pH is 8 - 8.5</i>			
<i>High speed disperse to 6+ NS Hegman grind.</i>			
<i>LETDOWN</i>			
Duramac WR 207-3738	[1]	137.81	15.84
Ammonia Hydroxide (28%)		7.93	1.06
2-Butanol		5.62	0.84
Butyl Cellosolve	[2]	4.01	0.53
12% Cobalt Ten-Cem		1.76	0.00
12% Zirconium Hex-Cem	[6]	1.30	0.16
Activ 8	[7]	0.94	0.12
HALOX 570 (30% solution)	[5]	9.70	0.94
Water		337.00	40.38
<i>Add to adjust viscosity as needed.</i>			
Water		82.40	9.87
TOTAL		971.25	100.00

Formula Constants

Density (lb/gal)	9.71
Density (g/L)	1163.96
Weight Pigment (%)	17.83
Volume Pigment (%)	5.50
Weight Solids (%)	37.91
Volume Solids (%)	25.92
PVC (%)	21.53
VOC (lb/gal)	2.62
VOC (g/L)	314.55

Formula Properties

pH @ 25°C	8.0 - 9.0
Viscosity - Stormer (KU) @ 25°C	80 - 85

2 weeks Heat Stability at 120F: +10KU

Supplier Key

- [1] Hexion
- [2] The Dow Chemical Company
- [3] Byk - Chemie USA Inc.
- [4] DuPont Chemicals
- [5] HALOX
- [6] OMG Americas, Inc.
- [7] R.T. Vanderbilt Company, Inc.

The information contained herein is correct to the best of our knowledge, but is intended only as a source of information. The recommendations or suggestions herein are made without guarantee of representation as to results, and we suggest that you evaluate the recommendations contained in this formulation in your own laboratory prior to use.

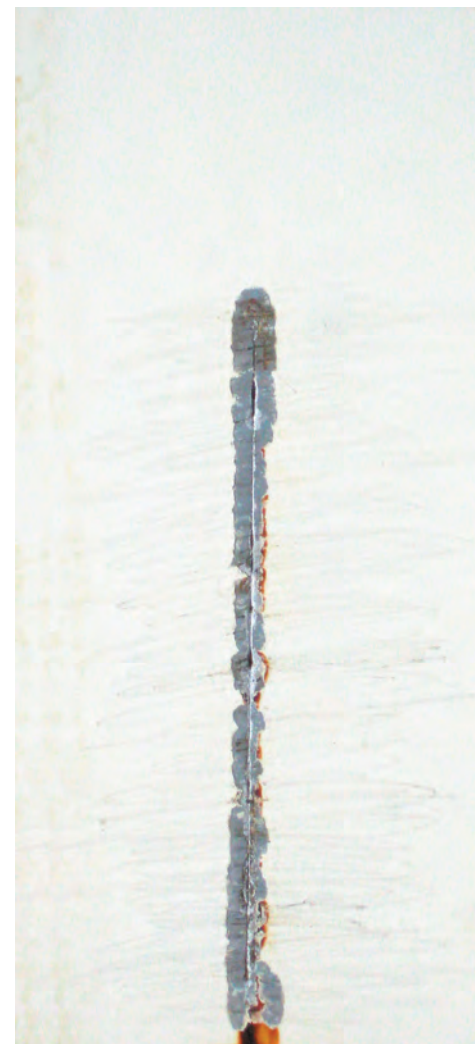
Water Reducible Alkyd Enamel with Duramac WR 207-3738
336 hrs Salt Spray - Spatula Scrape Adhesion
Cold Rolled Steel - 2.0 mils



Blank



5% SZP-391JM



5% SZP-391JM
1% HALOX 570

Water Reducible Alkyd Enamel with Duramac WR 207-3738
504 hrs Salt Spray - Spatula Scrape Adhesion
Cold Rolled Steel - 2.0 mils



Blank



5% SZP-391JM



5% SZP-391JM
1% HALOX 570

Water Reducible Alkyd Enamel with Duramac WR 207-3738

336 hrs Humidity

Cold Rolled Steel - 2.0 mils



Blank



5% SZP-391JM



5% SZP-391JM
1% HALOX 570