



# FORMULATION

## Solvent-Based Medium Oil Alkyd Primer using HALOX® SZP-391 and HALOX® 630

### GRIND

### % WT./WT.

### CLASS

### FORMULA CONSTANTS

Add the following under good agitation.

<u>GRIND</u>	<u>% WT./WT.</u>	<u>CLASS</u>
Beckosol 11035	[1] 23.91	Resin
Mineral Spirits (Odorless)	[2] 13.28	Solvent
HALOX® SZP-391	[3] 7.92	Inhibitor
Nyral 400	[4] 18.07	Talc
Bayferrox 222 FM	[5] 8.86	Pigment
Sparmite C	[6] 5.99	Barytes
Bentone SD-1	[7] 0.50	Thickener
HALOX® 630	[3] 1.00	Inhibitor

Density (g/L)	1258.21
Weight Pigment (%)	40.83
Volume Pigment (%)	14.99
Weight Solids (%)	63.98
Volume Solids (%)	41.05
PVC (%)	37.93
VOC (g/L)	449.39

High speed disperse to 6+ NS Hegman grind.

### LETDOWN

<u>LETDOWN</u>	<u>% WT./WT.</u>	<u>CLASS</u>
Beckosol 11035	[1] 19.41	Resin
6% Cobalt Cem-All	[8] 0.23	Drier
8% Calcium Cem-All	[8] 0.19	Drier
12% Zirconium Cem-All	[8] 0.35	Drier
Exkin No. 2	[9] 0.30	Additive

### FORMULA PROPERTIES

Viscosity - Stormer (KU) @ 25°C	80-85
------------------------------------	-------

### SUPPLIER KEY

- [1] Reichhold, Inc.
- [2] Shell Chemical
- [3] HALOX®
- [4] R.T. Vanderbilt Company, Inc.
- [5] Lanxess
- [6] Elementis Pigments Inc.
- [7] Elementis Specialties, Inc.
- [8] OMG Americas, Inc.
- [9] Elementis

### **TOTAL**

100.00

NOTICE: Although the information and recommendations set forth herein (hereinafter "Information") are presented in good faith and believed to be correct as of the date hereof, ICL Performance Products LP ("ICL") makes no representations or warranties as to the completeness or accuracy thereof. Information is supplied upon the condition that the persons receiving same will make their own determination as to its suitability for their purposes prior to use. In no event will ICL be responsible for damages of any nature whatsoever resulting from the use or reliance upon Information or the product to which Information refers. Nothing contained herein is to be construed as a recommendation to use any product, process, equipment or formulation in conflict with any patent, and ICL makes no representation or warranty, express or implied, that the use thereof will not infringe any patent. NO REPRESENTATIONS OR WARRANTIES, EITHER EXPRESSED OR IMPLIED, OF MERCHANTABILITY, FITNESS FOR A PARTICULAR PURPOSE OR OF ANY OTHER NATURE ARE MADE HEREUNDER WITH RESPECT TO INFORMATION OR THE PRODUCT TO WHICH INFORMATION REFERS.

© 2013 HALOX® a Division of ICL Performance Products LP. All Rights Reserved.

**WE MAKE COATINGS BETTER.**

1326 Summer Street, Hammond, Indiana 46319 USA  
P: 219.933.1560 E: techservice@halox.com  
www.halox.com

**Beck 11035/391-630E**

# **HALOX<sup>®</sup> Optimized Synergy**

## **Solvent-Based Medium Oil Alkyd Primer**

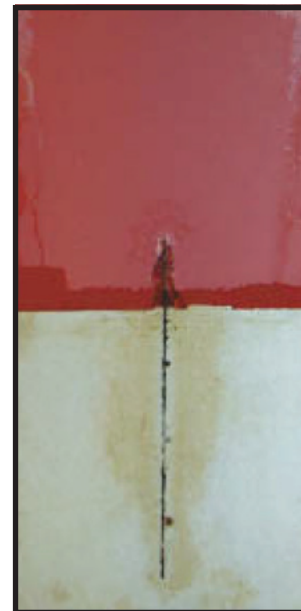
192 hrs. Salt Spray  
Cold Rolled Steel (Matte Finish)  
1.5 mils +/- 10%  
% on Total Formula Weight



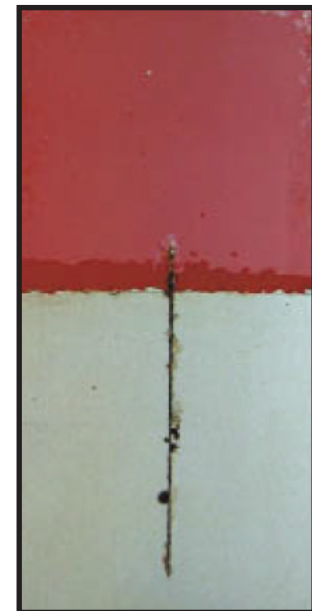
Blank  
(No Corrosion Inhibitor)



Competitive Control @ 8.0% / 1.0%  
(Inorganic/Organic Blend)



HALOX<sup>®</sup> SZP-391 @ 8.0%  
(Inorganic)

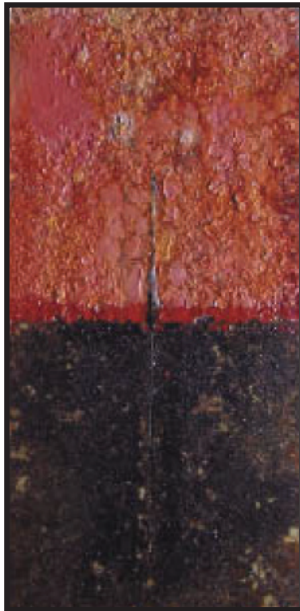


HALOX<sup>®</sup> SZP-391/630 @ 8.0% / 1.0%  
(Inorganic/Organic Blend)

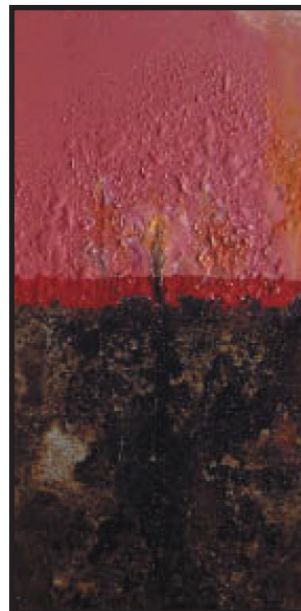
# **HALOX<sup>®</sup> Optimized Synergy**

## **Solvent-Based Medium Oil Alkyd Primer**

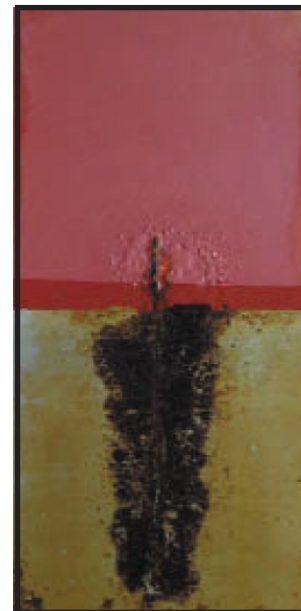
Salt Spray - 336 hrs.  
Cold Rolled Steel (Matte Finish)  
1.5 mils +/- 10%  
% on Total Formula Weight



Blank  
(No Corrosion Inhibitor)



Competitive Control @ 8.0% / 1.0%  
(Inorganic/Organic Blend)



HALOX<sup>®</sup> SZP-391 @ 8.0%  
(Inorganic)



HALOX<sup>®</sup> SZP-391/630 @ 8.0% / 1.0%  
(Inorganic/Organic Blend)